



World Archery Field Championships 2016

Kevin MacDermott
President Archery Ireland





Contents

The Country
Getting there
The Venue
Accommodation
Events
Attractions
Conclusion







The Country

- Small country with less than 5m population
- Renowned for our hospitality, and “craic”
- World renowned landscapes
- Temperate climate, Autumn mild but can be windy!!!





Getting there

- Air transit (Direct Flights from 170 countries)
- By sea crossing from UK/France
- Main airports Dublin, Shannon, Cork, Belfast
- (no airport more than 3 hrs travel time from location)





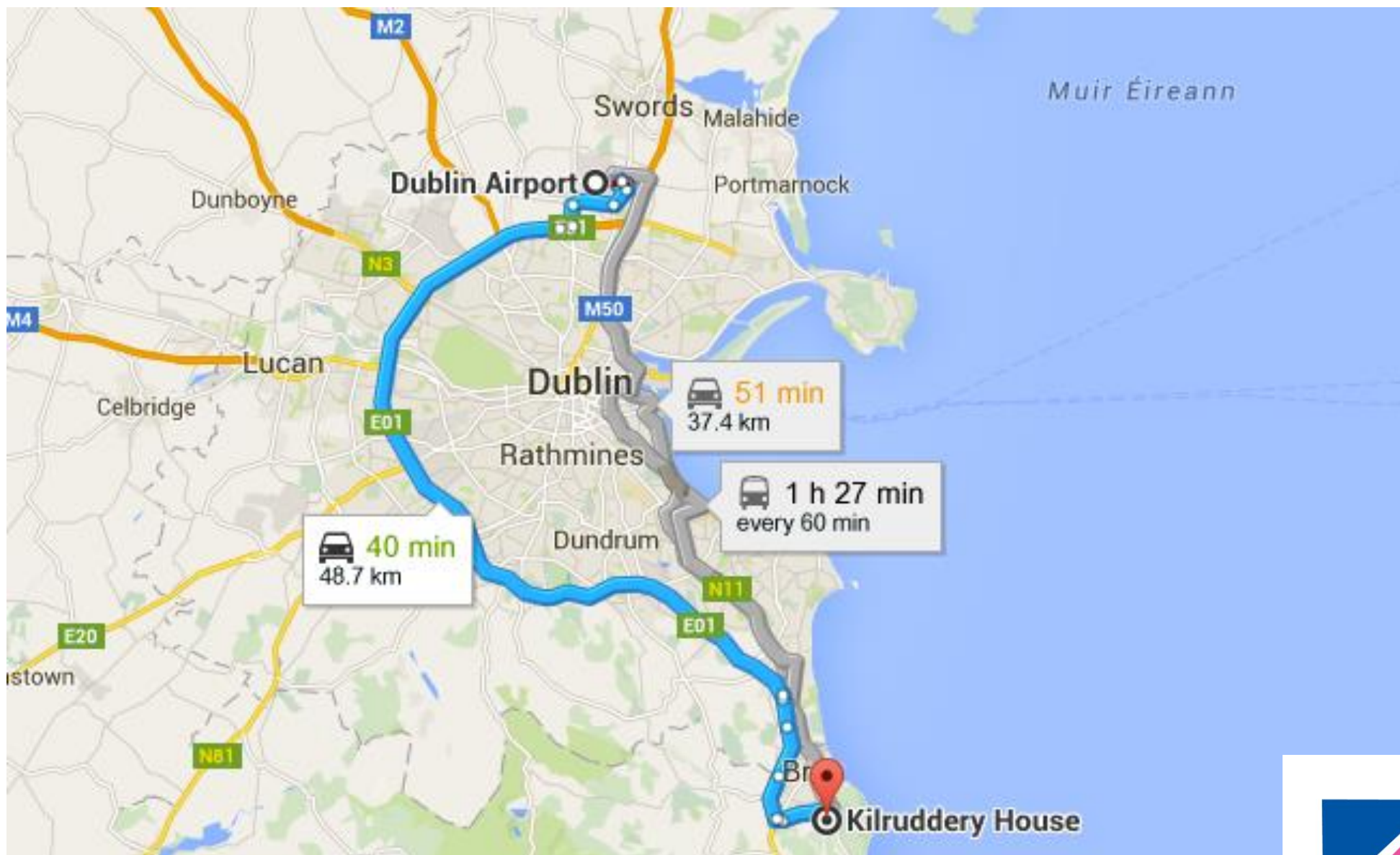
Kilruddery House and Gardens

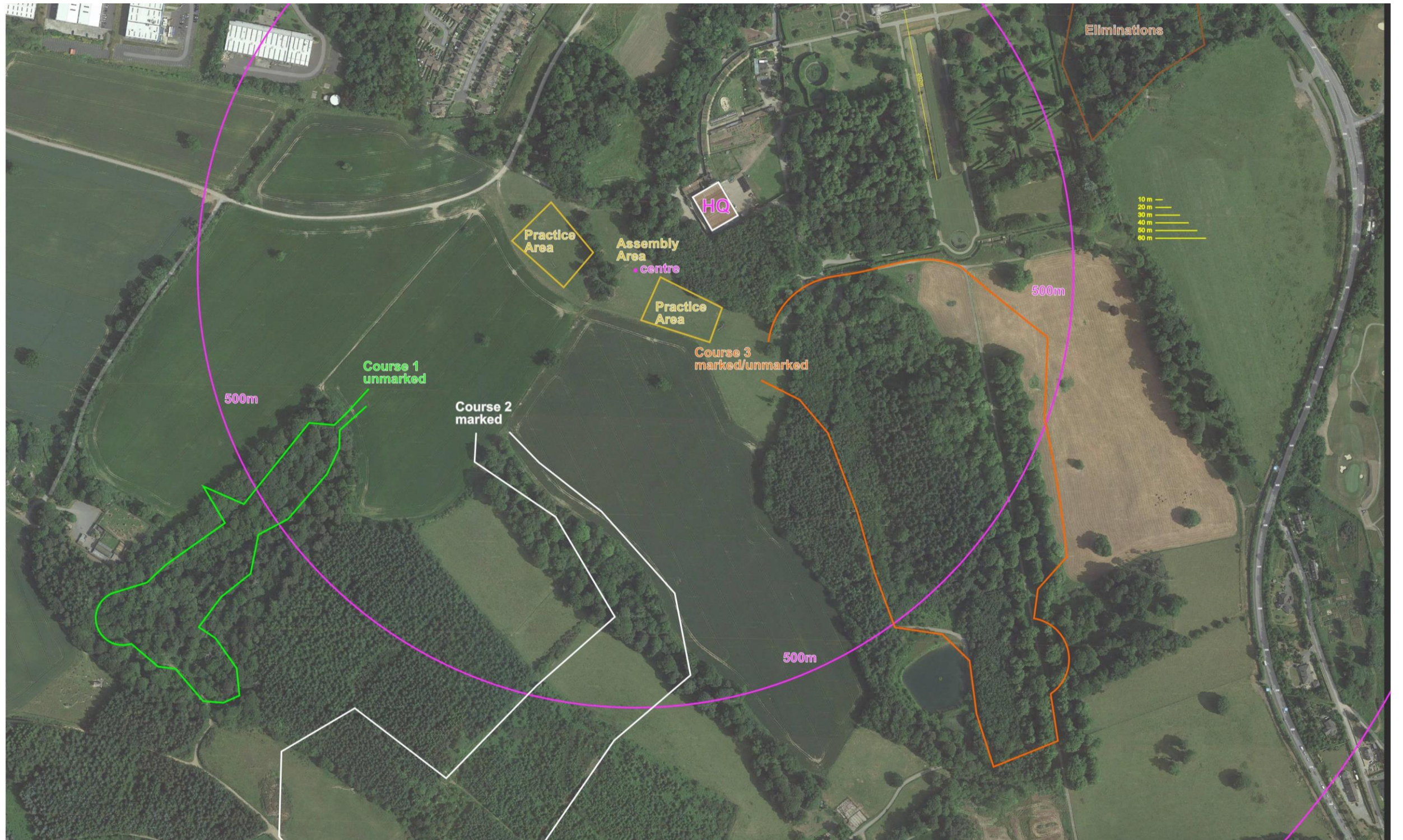
- On outskirts of Bray, Co Wicklow
- Self contained farm and gardens for competition
- Easy access from official hotels and Dublin city centre
- Outstanding natural beauty





Distance from Dublin Airport

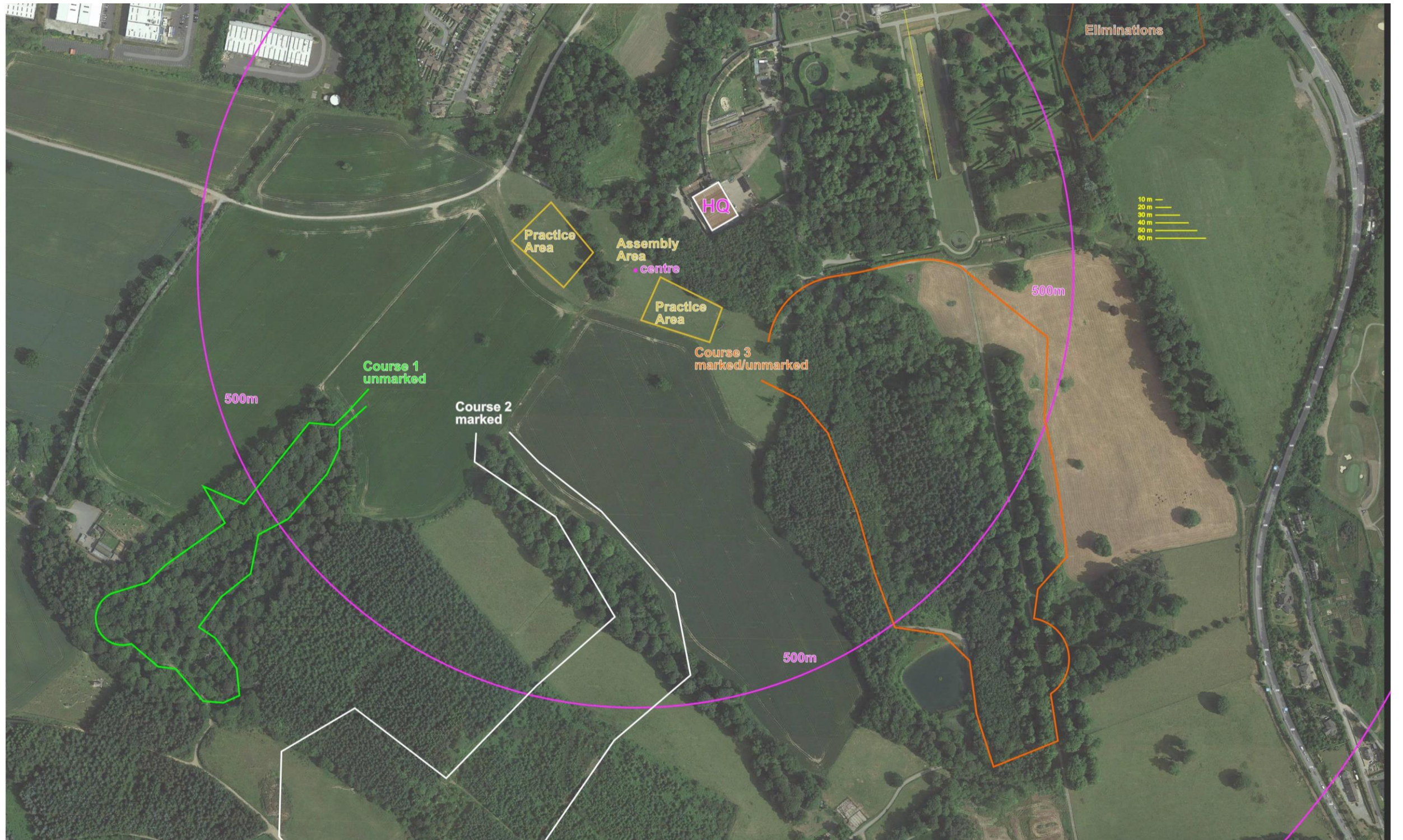




Course Layout



Course Terrain



Course Layout



Course Terrain

Official Accommodation

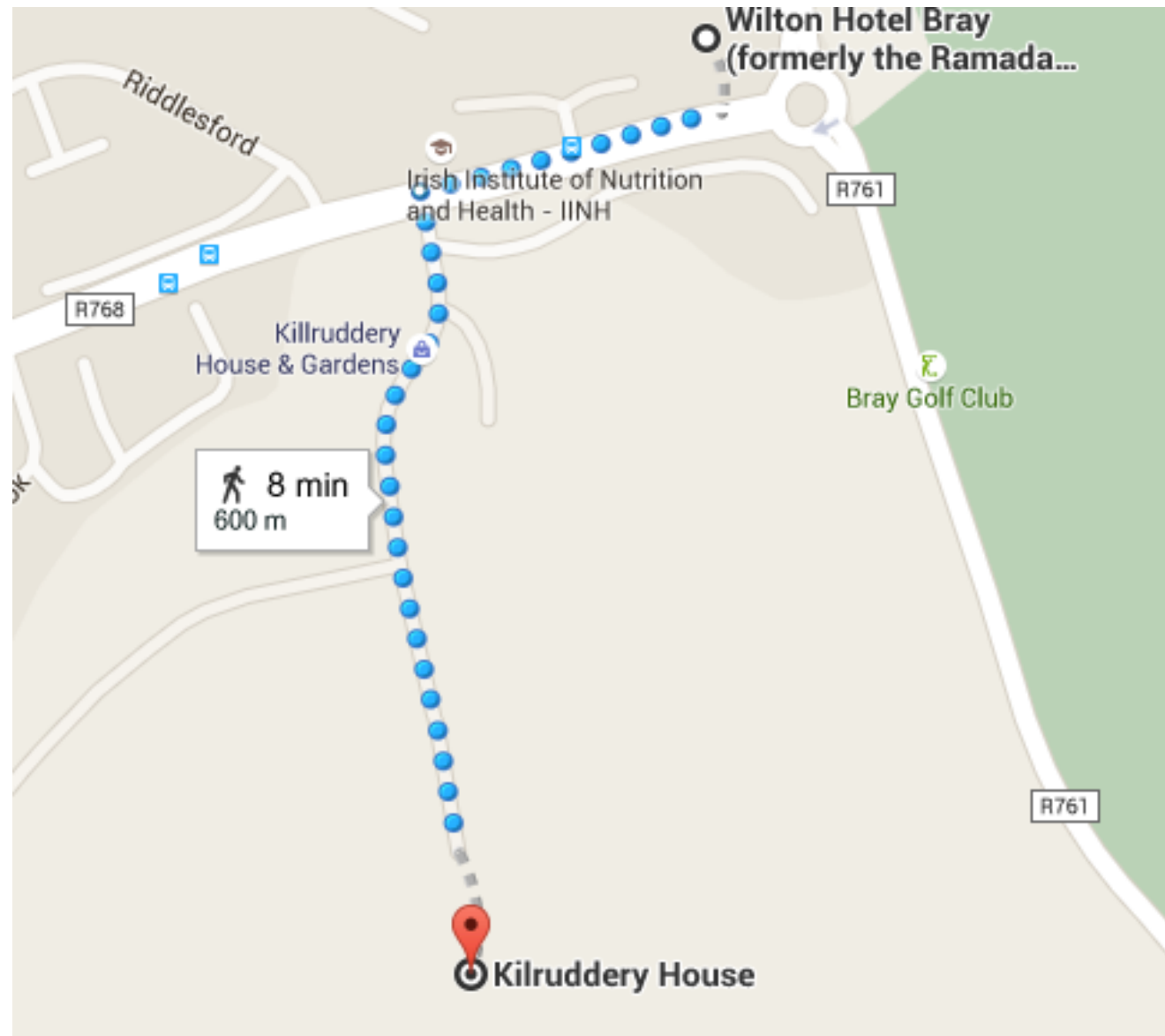
- 3 price levels (still in negotiation)
- Longest distance from venue is 8 km
- Nearest Hotel within walking distance





Wilton Hotel





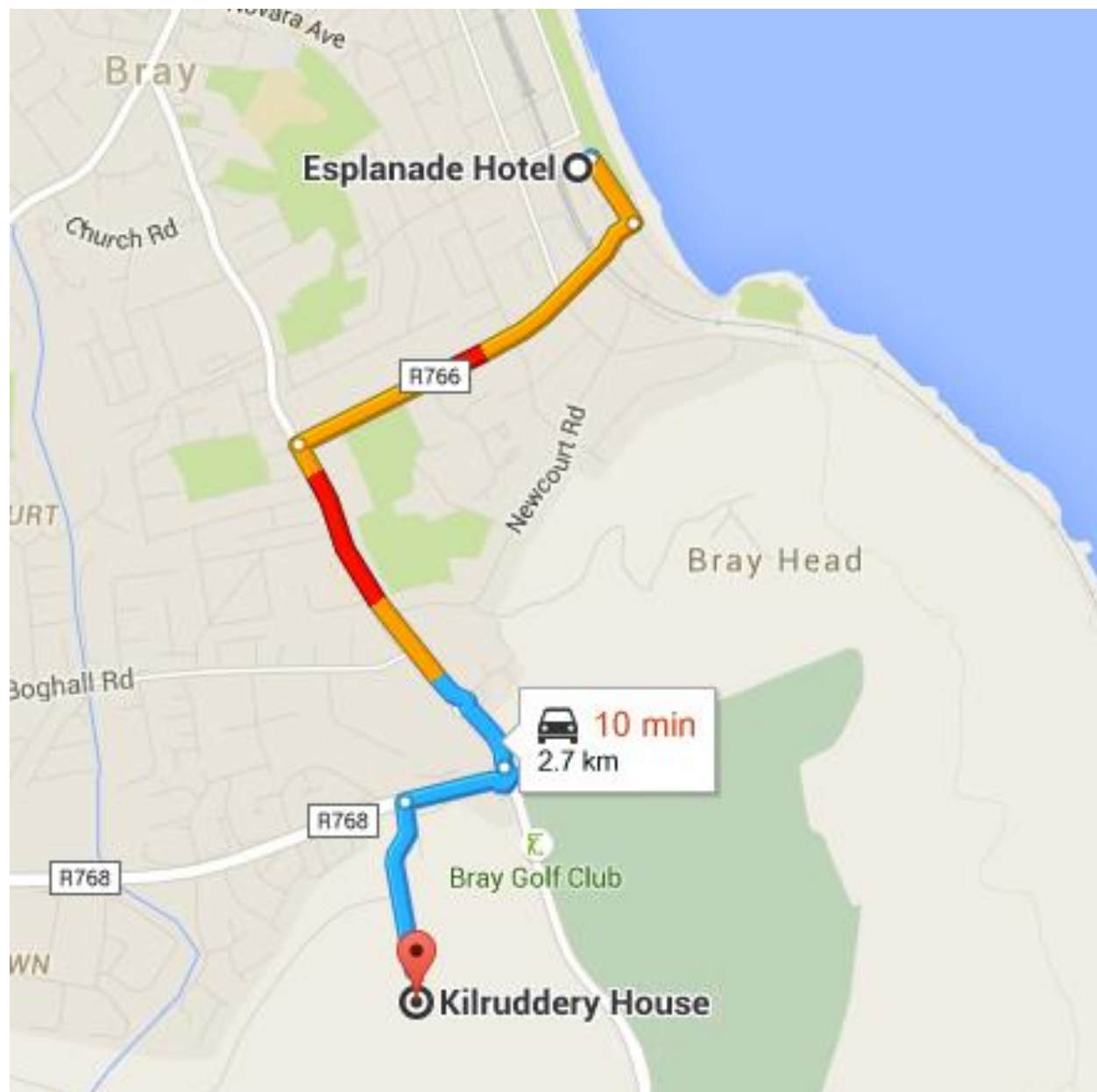
Distance to Venue





Esplanade Hotel





Distance to Venue





Summerhill House
Hotel





Distance to Venue





Events

- Irish National Series Finals (previous weekend)
- Farmers Market (running during the championships)
- Banquet
- Opening Parade
- Closing ceremony





Related activities

- Test Event, Kilruddery House September 26/27 2015
- Archery Festival (including All Ireland series finals) September 19/20 2015
- 2016 Centenary of “Easter Rising”
- GAA finals, Football and Hurling September





Guinness Storehouse





Book of Kells





Newgrange



“Tagann tú mar Gall, imíonn tú mar Ghael.”

–Irish Proverb

