



Indoor world series 250

Taipei Archery Open



Indoor World Series 250-Taipei Archery Open

A. Date: 8 Dec 2022 to 11 Dec 2022

B. Venue: NTSU Arena, Taoyuan City

C. Registration period: Registration on [OpenWAREOS](#), 1 Nov 2022 to 2 Dec 2022. For any questions regarding the OpenWAREOS, please contact: support@archery.sport

D. Event:

1. Indoor World Series 250


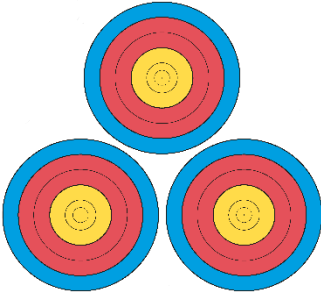
- i. **Categories:** recurve men (RM), recurve women (RW), compound men (CM) and compound women (CW)
- ii. **Distance for all divisions:** 18 M
- iii. **Qualification:** Archers should go over 60 arrows+ Matches in the QUALIFICATION ROUND. The top 32 athletes after the qualification rounds of each division will qualify for the ELIMINATION ROUNDS. In case of a tie at the 32nd place after the qualification round a shoot off will be organized.

iv. Elite Ranking Points

World Archery will produce an elite Indoor World Series ranking list from the points accumulated from the positional points based on the final ranking achieved at each stage to identify who qualifies for the Indoor World Series Final in Las Vegas. The following table illustrates the distribution of elite ranking points. Elite ranking points will be only available to the following categories: **recurve men (RM), recurve women (RW), compound men (CM) and compound women (CW).**

Position	World Series 250 Ranking Points
1 st	250 points
2 nd	150 points
3 rd	125 points
4 th	75 points
5 th	60 points
6 th	50 points
7 th	45 points
8 th	30 points
9 th -16 th	20 points

- v. **Target:** The 40 cm normal vertical format and triangular triple-spot target face with gold – red– blue (10-9-8-7-6) scoring areas will be used in the following situation:

Qualification & Elimination Round normal vertical format	Final triangular triple-spot target
	

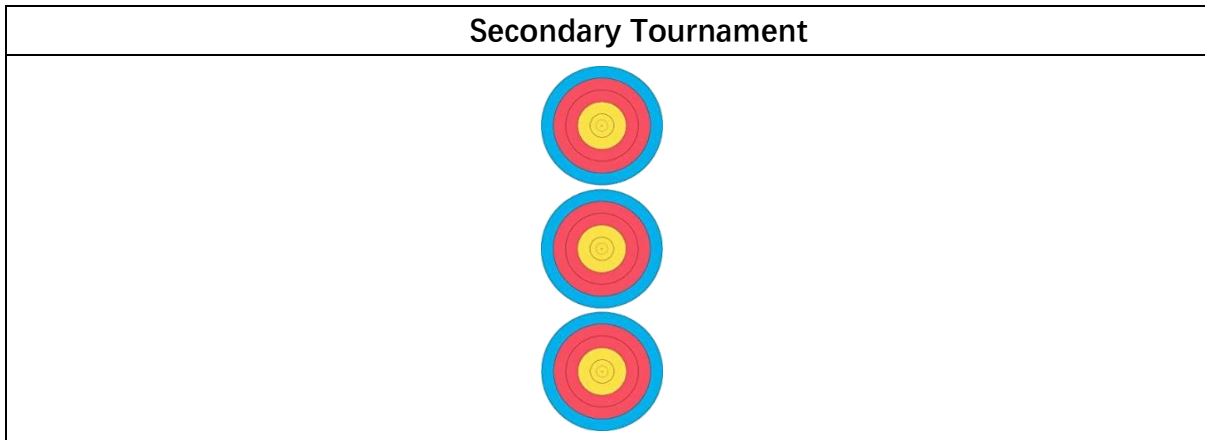
vi. **Awards:**

Position	World Series 250 All Categories
1 st	2,000 USD
2 nd	1,000 USD
3 rd	500 USD
4 th	250 USD
5 th -8 th	150 USD
9 th -16 th	100 USD

2. **Secondary Tournament**

- i. **Categories:** recurve men (RM), recurve women (RW), compound men (CM) and compound women (CW)
- ii. **Distance for all divisions:** 18 M
- iii. **Qualification:** Archers who are not qualified for the ELIMINATION ROUNDS may attend the secondary tournament. 1 end warm up immediately followed by 4 ends of 3 arrows, target will be using official target of the division. In case of a perfect tie after the 12 arrows, the athletes will be ranked by the qualification round, if a tie persist both archers will get the same award.
- iv. **Target:** The 40 cm normal vertical format triple-spot target face with gold

– red– blue (10-9-8-7-6) scoring areas will be used.


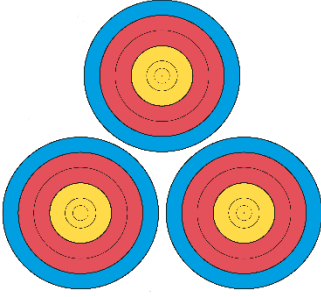


v. Awards

Position	Secondary Tournament Recurve	Secondary Tournament Compound
1 st	1 Sight	1 Sight
2 nd	1 Stabilization	1 Stabilization
3 rd	1 Plunger	1 Peep Sight kit

3. U21 Tournament

- i. **Categories:** recurve men (RU21M), recurve women (RU21W), compound men (CU21M) and compound women (CU21W)
- ii. **Distance for all divisions:** 18 M
- iii. **Qualification:** This tournament only open for archers under 21 years old (born after 1/1/2002). All the U21 archers should go over 60 arrows in the QUALIFICATION ROUND. The top 32 archers after the qualification rounds of each division will qualify for the ELIMINATION ROUNDS. In case of a tie at the 32nd place after the qualification round a shoot off will be organized.
- iv. **Target:** The 40 cm normal vertical format and triangular triple-spot target face with gold – red– blue (10-9-8-7-6) scoring areas will be used in the following situation:

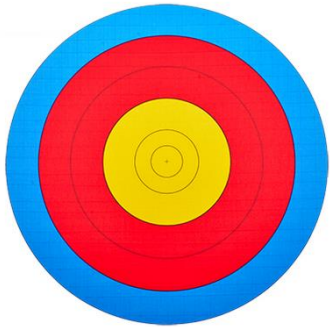
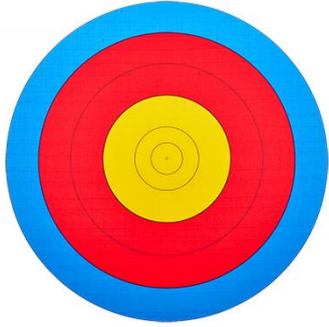
Qualification & Elimination Round normal vertical format	Final triangular triple-spot target
	

v. **Awards:**

Position	U21 Tournament All Categories
1 st	800 USD
2 nd	400 USD
3 rd	200 USD
4 th	100 USD
5 th -8 th	50 USD

4. U15 Tournament

- i. **Categories:** recurve men (RU15B), recurve women (RU15G),
- ii. **Distance for all divisions:** 18 M
- iii. **Qualification:** This tournament only open for archers under 15 years old (born after 1/1/2008). All the U15 archers should go over 60 arrows + matches in the QUALIFICATION ROUND. The top 8 archers after the qualification rounds of each division will qualify for the ELIMINATION ROUNDS.
- iv. **Target:** The 60 cm single-spot face with gold – red– blue (10-9-8-7-6) scoring areas will be used in the following situation:

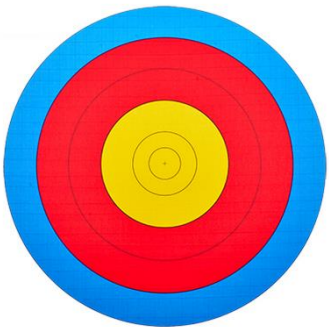
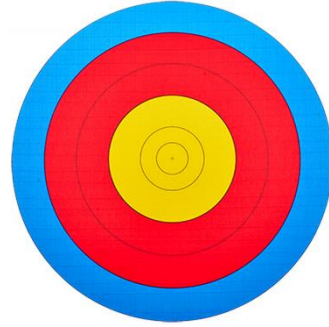
Qualification & Elimination Round	Final
	

v. Awards:

Position	U15 Tournament All Categories
1 st	1 Sight
2 nd	1 Stabilization
3 rd -4 th	1 Plunger

5. U12 Tournament

- i. **Categories:** recurve men (RU12B), recurve women (RU12G),
- ii. **Distance for all divisions:** 18 M
- iii. **Qualification:** This tournament only open for archers under 12 years old (born after 1/1/2011). All the U12 archers should go over 60 arrows + matches in the QUALIFICATION ROUND. The top 8 archers after the qualification rounds of each division will qualify for the ELIMINATION ROUNDS.
- iv. **Target:** The 60 cm single-spot face with gold – red– blue (10-9-8-7-6) scoring areas will be used in the following situation:

Qualification & Elimination Round	Final
	

v. Awards:

Position	U12 Tournament All Categories
1 st	1 Sight
2 nd	1 Stabilization
3 rd -4 th	1 Plunger

6. Registration fee (per archer)

Archers may only register in ONE category and division and will remain in the same division during the competition.

Categories	Registration fee
RW, RM, CW, CM	USD 150
RU21W, RU21M, CU21W, CU21M	USD 100
RU15G, RU15B	USD 50
RU12G, RU12B	USD 50



E. Schedule

Our Welcome Desk will be available at the NTSU Arena main entrance and service hours are as follow:

1. 8 Dec 2022 (Thurs) – 10 Dec 2022 (Sat), 7AM to 7PM
2. 11 Dec 2022 (Sun), 7AM to 8PM

**All competition will be at the NTSU Arena
Schedule as attached vers 1.0**

Please frequently refer to official website for latest updates of the schedule, as changes may occur during the week.



F. Practice

The paid practice field located in the NTSU Arena, paid practice each session is 10 USD, first come first serve.

Date	Time	Main Venue Activities
8 Dec 2022 (Thurs)	13:30-15:00	Paid practice
	15:30-17:00	Paid practice
9 Dec 2022 (Fri)	07:00-08:30	Paid practice

G. Event Bow Storage

Our Bow Storage will be available at the NTSU Arena and each regular bow storage is 10 USD. Service hours, and schedule are as follow:

1. 8 Dec 2022 (Thurs) – 10 Dec 2022 (Sat), 7AM to 7PM
2. 11 Dec 2022 (Sun), 7AM to 1PM

H. Vendor Schedule

Booth Space: 3m * 3 m.

Each Booth: 1,000 USD

Date	Time	Activities
7-8 Dec 2022 (Thurs)	10:00-17:00	Vendor Check-in/Move-in
9 Dec 2022 (Fri)	07:00-09:00	Vendor Check-in/Move-in
	10:00-17:00	Show Open to Public
10 Dec 2022 (Sat)	10:00-17:00	Show Open to Public
11 Dec 2022 (Sun)	10:00-17:00	Show Open to Public
	17:00-19:00	Limited Vendor Move-Out

I. Travel & Visas

International Travel During COVID-19

Please [click](#) to view all current rules and protocols for international travel to and from the Taoyuan City.

Instructions for passengers before arriving in Taoyuan City and clearance at the airport (updated 2022/10/13):

1. Arriving travelers are exempted from making a health declaration on the Quarantine System for Entry before arrival and having a mobile phone with a

- Taiwanese number.
2. The COVID-19 Health Declaration and Home Quarantine Notice are no longer issued to arriving travelers.
 3. Travelers who tested positive for COVID-19 abroad must defer their flights to Taiwan for > 7 days from the specimen collection date.
 4. Arriving travelers who have experienced any suspected COVID-19 symptoms in the 14 days before arrival should receive a health assessment by a quarantine officer upon arrival and cooperate in undergoing a saliva PCR test.
 5. Arriving travelers are no longer required to be quarantined, but to undergo a seven-day period of self-initiated prevention instead.

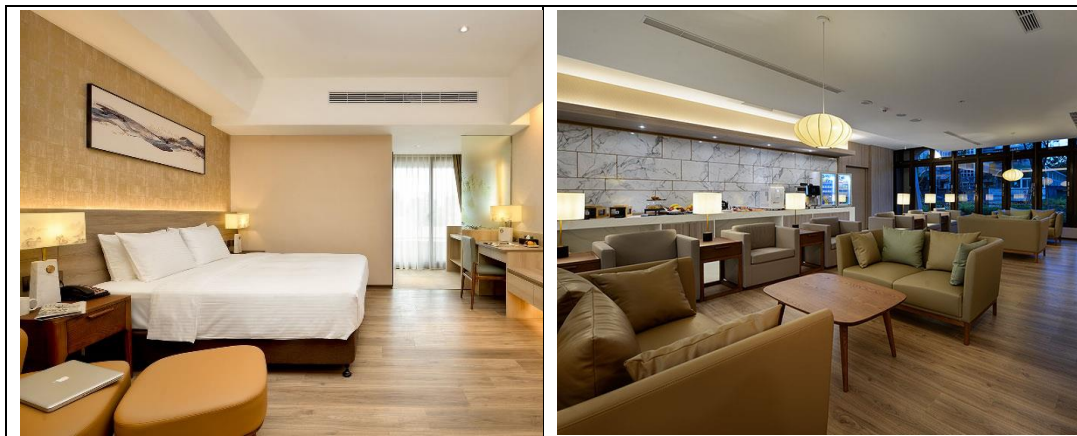
Standard Entry Documents

A visa is required for all visitors to enter the Taoyuan City except for foreign nationals eligible for visa-exempt entry. [Click](#) to view full list of countries eligible for the Visa Exempt Entry. Visa Support: 1 Nov 2022 to 15 NOV 2022. For any questions regarding the Visa, please contact: ctaaint@gmail.com

J. Accommodation

1. Joyfutel (4 star)

Joyfutel is located 3 km distance from NTSU Arena and nearby Taoyuan Metro A8 Station. There are 3 types of room which price range between **USD 190 and USD 220 per night**. For more booking details please log on [Joyfutel website](#).



2. Fullon Hotel Taoyuan Airport MRT A8 (4 star)

Fullon Hotel is located 4 km distance from NTSU Arena and beside Chang Gung Memorial Hospital A8 Station of the Taoyuan Metro. There are 6 types of room which price range between **USD 110 and USD 180 per night**. For more booking details please log on [Fullon Hotel website](#).



3. **Four Points by Sheraton Linkou** (4 star)

Four Points by Sheraton Linkou is located 5 km distance from NTSU Arena and beside Linkou A9 Station of the Taoyuan Metro. There are 5 types of room which price range between **USD 160 and USD 380 per night**. For more booking details please log on [Four Points by Sheraton Linkou website](#).



K. Transportation

1. **Taoyuan International Airport**

Taoyuan International Airport is located 30 km distance from NTSU Arena. The public transportation available at the airport including bus, MRT, Taxi, High Speed Rail, and car rental. For more information, please refer to [Taoyuan International Airport website](#).

2. **Taipei Songshan Airport**

Taipei Songshan Airport is located 25 km distance from NTSU Arena. The public transportation available at the airport including bus, MRT, Taxi, and car rental. For more information, please refer to [Taipei Songshan Airport website](#).

3. Taoyuan Metro A7 NTSU Station

This is the nearest MRT station which is 1km distance from NTSU Arena. A7 NTSU Station is linking with **Taoyuan International Airport** and **Taipei Main Station**. For the MRT timetable please refer to [Taoyuan Metro website](#).

L. Contact

service@indoortpe.com

Ms. Tzu-Yun LIN

+886-2-2721-6182

+886-958-267-375



Indoor world series 250
Taipei Archery Open

SCHEDULE

Vers. 1.0 (7 Dec 2022 06:00 UTC)

9 Dec 2022, Friday

07:00-19:00	12:00	Registration and Welcome Desk at the NTSU Arena
07:00-08:30	01:30	Paid Practice
Qualification Rounds		
Qualification Round Under 21		
09:00-12:00	03:00	3 ends of practice followed by qualification (AB-CD) Qualification Round Under 21
Individual Matches		
12:30-12:34	00:04	U21: 1 end of practice followed by competition, only matches
12:34-13:15	00:41	1/16: RU21M, RU21W, CU21M
Qualification Rounds		
Qualification Round Under 15 and Under 12		
14:00-17:00	03:00	3 ends of practice followed by qualification (AB-CD) Qualification Round Under 15 and Under 12
17:15		Shoot Off, if necessary

10 Dec 2022, Saturday

07:00-19:00	12:00	Registration and Welcome Desk at the NTSU Arena
Qualification Rounds		
Qualification Round IWS		
09:00-12:00	03:00	3 ends of practice followed by qualification (AB-CD) Qualification Round IWS
12:15		Shoot Off, if necessary
Individual Matches		
13:30-13:34	00:04	RM: 1 end of practice followed by competition
13:34-14:15	00:41	1/16: RM
14:15-14:19	00:04	RW + CM: 1 end of practice followed by competition, byes can shoot
14:19-15:00	00:41	1/16: RW, CM
15:10-15:20	00:10	U21: 3 ends of practice followed by competition, byes can shoot
15:20-16:00	00:40	1/8: RU21M, RU21W, CU21M, CU21W
16:00-16:10	00:10	U21 + U15 + U12: 3 ends of practice followed by competition
16:10-16:45	00:35	1/4: RU21M, RU21W, CU21M, CU21W, RU15M, RU15W, RU12M, RU12W
16:45-17:15	00:30	1/2: RU21M, RU21W, CU21M, CU21W, RU15M, RU15W, RU12M, RU12W
17:15-17:45	00:30	Bronze: RU15M, RU15W, RU12M, RU12W Gold: RU15M, RU15W, RU12M, RU12W
18:00-18:30	00:30	Award Ceremony - Under 15 and Under 12 Categories

SCHEDULE

11 Dec 2022, Sunday

Secondary Tournament

08:00-09:00 01:00 1 end warm up immediately followed by 4 ends of 3 arrows, shooting AB-CD

09:15 **Award Ceremony - Secondary Tournament**

Individual Matches

09:30-09:40 00:10 RM + CW: 3 ends of practice followed by competition

09:40-10:15 00:35 1/8: RM, CW

10:15-10:25 00:10 RW + CM: 3 ends of practice followed by competition

10:25-11:00 00:35 1/8: RW, CM

11:00-11:04 00:04 1 end of practice followed by competition

11:04-11:40 00:36 1/4: RM, RW, CM, CW

11:40-12:10 00:30 1/2: RM, RW, CM, CW

13:30 Practice field open for qualified archers

Under 21 Finals

15:00-15:17 00:17 Bronze: Compound Under 21 Women

15:17-15:34 00:17 Gold: Compound Under 21 Women

15:34-15:51 00:17 Bronze: Compound Under 21 Men

15:51-16:08 00:17 Gold: Compound Under 21 Men

16:08-16:23 00:15 Bronze: Recurve Under 21 Women

16:23-16:38 00:15 Gold: Recurve Under 21 Women

16:38-16:53 00:15 Bronze: Recurve Under 21 Men

16:53-17:08 00:15 Gold: Recurve Under 21 Men

Individual Finals

17:30-17:47 00:17 Bronze: Compound Women

17:47-18:04 00:17 Gold: Compound Women

18:04-18:21 00:17 Bronze: Compound Men

18:21-18:38 00:17 Gold: Compound Men

18:38-18:53 00:15 Bronze: Recurve Women

18:53-19:08 00:15 Gold: Recurve Women

19:08-19:23 00:15 Bronze: Recurve Men

19:23-19:38 00:15 Gold: Recurve Men

20:00 **Award Ceremony - Under 21 and IWS Categories**