



GT OPEN Indoor World Series

17-19 November 2023, Strassen - LUX



TO ALL World Archery Member Associations and Athletes,
Dear President,
Dear Athlete,

As Chair of the Local Organizing Committee (LOC) of the 2023 GT Open Indoor World Serie to be held in Strassen, Luxembourg on **17-19 November 2023**, I would like to invite you all to be part of our 9th GT Open, which is included in World Archery's (Indoor World Series) for the 4th time.

We are looking forward to welcome you in Strassen, just outside of our beautiful capital Luxembourg City.

We are ready to make your visit unforgettably enjoyable.

Sincerely yours,

Jeff Henckels



GT OPEN Indoor World Series

17-19 November 2023, Strassen - LUX



IMPORTANT DATES

Please find enclosed detailed information regarding this event. To register participation, please complete all the necessary sections in WAREOS (<https://extranet.worldarchery.sport>) within the deadlines listed below.

Summary of deadlines:

Registration Opening date on WAREOS

Final Entries **15 November 2023**

Visa support **20 October 2023**

Full refund cancellation deadline **8 October 2023**

*After this deadline, the LOC is allowed to retain all amounts due by the Member Association or Athlete

Please respect the stated deadlines.

PRELIMINARY PROGRAMME

17 November 2023 **Qualification Round 1 & 2** (All Categories)
Friday

18 November 2023 **Qualification Round 3 & 4** (All Categories)
Saturday
Followed by
Individual Eliminations (1/16, 1/8)



GT OPEN Indoor World Series

17-19 November 2023, Strassen - LUX



19 November 2023
Sunday

Second Chance

Morning:

Individual Eliminations (1/4, 1/2 and Bronze Medal Matches)

Afternoon:

Gold Medal Matches

NOTE: This preliminary programme is subject to change according to participation and streaming requirements. All changes will be published and distributed in good time.

PRELIMINARY & FINAL REGISTRATION

All entries and visa invitation letter requests are to be completed using the World Archery Online Registration System WAREOS <https://extranet.worldarchery.sport>. This system handles the entire registration process for this event.

Member associations & athletes can login to WAREOS at <http://extranet.worldarchery.sport> with their username and password. After entering WAREOS, selecting the event from the list will allow a member association or athlete to register for the competition. Select/press the "Entries" button to see the list of categories in the event. Select/press the "category" to enter the athlete participating for that event. A WAREOS User Manual can be downloaded in PDF format (English) upon login.

Contact wareos@archery.sport with any questions regarding **technical problems on WAREOS**. For any question regarding the organization of the event (meals, invoices, visa etc.) please contact **directly the LOC**.

Member Associations can only use WAREOS to make any changes or amendments to entries and will be able to do so at any time. An email will automatically notify the Organizing Committee and Member Association of any changes made in WAREOS.

This event is also open to archers who are not part of a national team (club archers) and that individual registration (not through Member Association) is to be made through **OPENWAREOS** (not **WAREOS**)



GT OPEN Indoor World Series

17-19 November 2023, Strassen - LUX



ENTRY FEES

Individual	125 EUR per athlete
Individual Juniors	100 EUR per athlete

ACCOMMODATION (Nearby)

- Hotel Olivier ****
- Mandarina Hotel ***
- Skol Hotel ***
- BIVIUS Eat & Sleep ***
- Park Hotel ****

TRANSPORTATION

Luxembourg has an all-time free public transport. With good bus connection from the Airport to the City Center and/or Strassen +-30 Minutes.

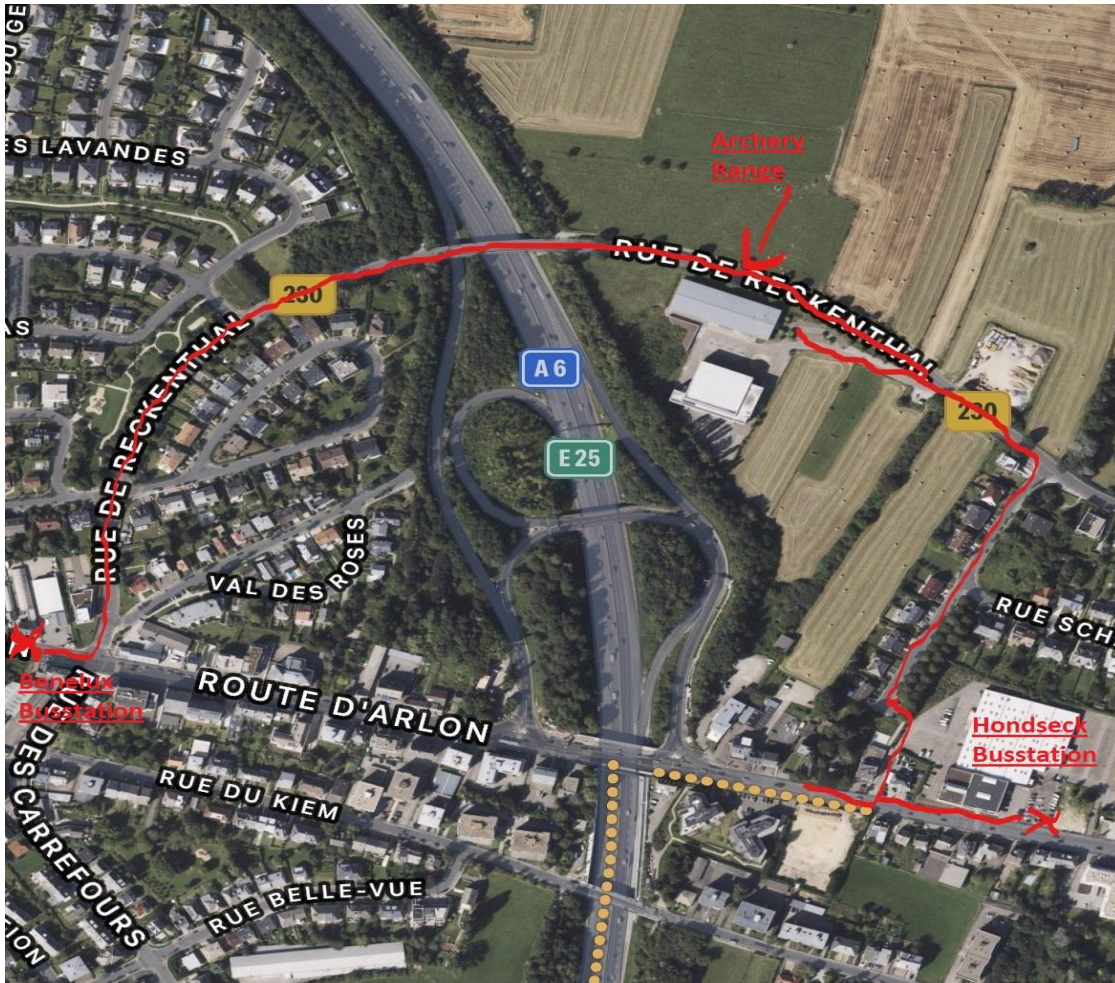
Please download the **Mobiliteit.lu** APP in App Store to find Bus and Train connection easily.



We do NOT offer Airport or Venue transportation.

Airport -> Strassen Bus Line

Bus line Nr.16 is going to Strassen without the need to change. (leaving approx. every 30 min)
Exit Terminal (Hondseck or Benelux) From there it's a 5 minutes walk.



Luxemburg does NOT have UBER or similar services.

VISA

All participants who need an entry visa to Luxembourg, will be required to complete the **Visa Support sections** in WAREOS by no later than **20 October 2023**.

It is the applicants' responsibility for supplying the necessary information, ensuring all details are up to date, correct and submitted by the deadlines specified.

In addition, all participants that require a visa are kindly requested to supply a copy of their latest/valid passport. Copies of each application can be uploaded on WAREOS. All passport copies and personal details entered/uploaded to WAREOS or OPENWAREOS will be held securely and in the strictest of confidence and not shared with other parties.



GT OPEN Indoor World Series

17-19 November 2023, Strassen - LUX



PAYMENT CONDITIONS

Complete all necessary sections in WAREOS or OPENWAREOS and make full payment by the specified deadlines. We mainly use Pay Pal, if necessary please contact LOC for Bank transfers details.

The entry fees should be paid in full before arrival.

Only complete payment will secure your spot.

Full refund cancellation deadline

8 October 2023

CANCELLATIONS & CHANGES

All cancellations and changes must be made through WAREOS / OPEN WAREOS:

- Should flight arrival details change last minute, please contact the Local Organizing Committee.
- Refunds in case of cancellations will be made until **8 October 2023**

ADDITIONAL INFORMATION

TRAINING

A training field will be available **17-18 November 2023** near the Venue with 1.5 hour training sessions at a price of 5 Euros per session.

Food at the Venue

We have food and drinks at any time during the competition at the venue.

(Sandwich, Pasta, Pizza, etc. Vegetarian Options)



GT OPEN Indoor World Series

17-19 November 2023, Strassen - LUX



Exhibitor / Sponsors

If you wish to have a booth stand to promote your products or want to become a sponsor of our event please contact the LOC mail.

info@gt-s.lu

Venue Adresse

Name: Guillaume Tell Strassen

Address: 299, rue de Reckenthal

2410 Strassen

Luxembourg

LOC Contact

Name: Guillaume Tell Strassen

Address: 299, rue de Reckenthal

2410 Strassen

Luxembourg

Email: info@gt-s.lu

Language: English / French / German

Looking forward to welcoming you in Strassen, Luxembourg

Friday, November 17th

Qualification rounds 1&2

Qualification round 1

13:00-16:00 Equipment inspection before practice - 3 ends of practice followed by qualification (AB-CD)

Qualification round first 30 arrows (30sec. per arrow) New WA Timing

Qualification round second 30 arrows (30sec. per arrow) New WA Timing

Qualification round 2

17:00-20:00 Equipment inspection before practice - 3 ends of practice followed by qualification (AB-CD)

Qualification round first 30 arrows (30sec. per arrow) New WA Timing

Qualification round second 30 arrows (30sec. per arrow) New WA Timing

Saturday, November 18th

Qualification rounds 3&4

Qualification round 3

08:00-11:00 Equipment inspection before practice - 3 ends of practice followed by qualification (AB-CD)

Qualification round first 30 arrows (30sec. per arrow) New WA Timing

Qualification round second 30 arrows (30sec. per arrow) New WA Timing

Qualification round 4

12:00-15:00 Equipment inspection before practice - 3 ends of practice followed by qualification (AB-CD)

Qualification round first 30 arrows (30sec. per arrow) New WA Timing

Qualification round second 30 arrows (30sec. per arrow) New WA Timing

If shoot off is necessary

15:00-15:25 2 ends of practice followed by shoot off

15:25-15:40 (15) Field Re-setup

Individual matches

15:40-16:20 (40) RM & CM - 3 ends of practice followed by competition
1/16: RM, CM

16:20-16:35 (15) Field Re-setup

16:35-17:15 (40) RW & CW - 3 ends of practice followed by competition
1/16: RW, CW

:
 17:15-17:30 (15) Field Re-setup
 17:30-18:05 (35) **RM, RW, CW, CM** - 1 ends of practice followed by competition
 1/8: **RM, RW, CW, CM**
 18:05-18:20 (15) Field Re-setup
 18:20-19:00 (40) **RU21M, RU21W, CU21W, CU21M** -3 ends of practice followed by competition
 1/8: **RU21M, RU21W, CU21W, CU21M**

Sunday, November 19th

Second chance:

1st Round of Second chance

07:40-08:10 (30) 2 ends of warm-up followed by 4 ends of second chance scoring (AB-CD)

08:10-08:25 (15) Field Re-setup

2nd Round of Second chance

08:25-09:05 (30) 2 ends of warm-up followed by 4 ends of second chance scoring (AB-CD)

09:05-09:20 (15) Field Re-setup

Individual matches:

09:20-09:35 (15) **RM, RW, CM, CW / RU21M, RU21W, CU21W, CU21M**
 - 3 ends of practice followed by ¼ Final

09:35-10:05 (30) **1/4 RM, RW, CM, CW / RU21M, RU21W, CU21W, CU21M**
 10:05-10:35 (30) **1/2 RM, RW, CM, CW / RU21M, RU21W, CU21W, CU21M**

10:35-11:05 (30) Bronze Match **RM, RW, CM, CW / RU21M, RU21W, CU21W, CU21M**

11:05-13:05 (2h) Session Break

Medal matches:

12:30 Practice field open for qualified archers

Individual matches:

13:05-13:22 (17) Gold: Compound U21 Women

13:22-13:39 (17) Gold: Compound U21 Men

13:39-13:56 (17) Gold: Recurve U21 Woman

13:56-14:13 (17) Gold: Recurve U21 Men

14:13-14:30 (17)	Gold: Compound Women
14:30-14:47 (17)	Gold: Recurve Women
14:47-15:04 (17)	Gold: Compound Men
15:04-15:21 (17)	Gold: Recurve Men
15:21-16:21 (60)	Award Ceremony CU21W / CU21M / RU21W / RU21M CW / CM / RW / RM