

# Hyundai Archery World Cup 2017, Stage 3 20 - 25 Jun – Salt Lake City (USA)

FINAL Version.1.1 (26 January 2017)

TO ALL World Archery MEMBER ASSOCIATIONS

Dear President,

The 3<sup>rd</sup> stage of the HYUNDAI ARCHERY WORLD CUP will be held in Salt Lake City, Utah, United States of America on 20 to 25 June 2017. On behalf of the Organizing Committee, it is a great pleasure to invite you to participate in this competition. This event will be organized following the Hyundai World Archery World Cup rules for 2017, in both divisions, recurve and compound.

Please find enclosed the necessary documents of registration, organization and participation for this event. Please completed all the sections in WAREOS before the deadlines:

Summary of deadlines:

- |  |               |
|--|---------------|
| • Preliminary Entries                  | 22 March 2017 |
| • Preliminary Hotel Reservation        | 22 March 2017 |
| • Visa Support                         | 22 March 2017 |
| • Final Hotel Reservation<br>& Payment | 15 May 2017   |
| • Transportation                       | 15 May 2017   |
| • Final Entries                        | 30 May 2017   |

Looking forward to welcoming you in Salt Lake City, United States of America.

Sincerely yours,

Mr. Greg Easton  
President  
Organizing Committee

### PRELIMINARY PROGRAMME:

18 Jun 2017 Sunday	Arrival of participants Practice field and local transport available
19 Jun 2017 Monday	Arrival of participants Practice field and local transport available
20 Jun 2017 Tuesday	<b>Official Practice</b> Equipment Inspection Team Managers Meeting
21 Jun 2017 Wednesday	<b>Qualification Round for Recurve and Compound</b> (Recurve 70m Round and Compound 50m Round) <b>Individual Eliminations 1/48 &amp; 1/24</b> (Recurve and Compound)
22 Jun 2017 Thursday	<b>Individual Eliminations 1/16 to semifinals and Mixed Team Eliminations to 1/8 to semi-finals</b> (All categories)
23 Jun 2017 Friday	<b>Team Eliminations 1/8 to semi-finals</b> (All categories)
24 Jun 2017 Saturday	<b>Finals – Compound</b> (Individual and Team) <b>Award Ceremonies</b>
25 Jun 2017 Sunday	<b>Finals – Recurve</b> (Individual and Team) <b>Award Ceremonies</b>
26 Jun 2017 Monday	Departure of teams

#### NOTE:

This preliminary program could be changed slightly according to number of participants and TV requirements. All changes will be published and distributed to all participants in good time

### PRELIMINARY & FINAL REGISTRATION

All entries, accommodation reservations, transport needs, flight arrival/departure information and visa invitation letter requests are to be completed using WAREOS.

The World Archery Online Registration System (WAREOS): <http://register.worldarchery.org> has been updated to handle the entire registration process for this event. No entry forms, hotel reservations or transport forms will be accepted as all information is to be entered into WAREOS.

In order to use WAREOS, please login on <http://register.worldarchery.org> with your Username and Password assigned by World Archery. After entering WAREOS, please find the event, from the list, you wish to register your athletes. Select/press the "Entries" button to see the list of categories in the event. Select/press the "category" to enter the athlete and official numbers/details participating for that event. A "WAREOS User Manual" can be downloaded in PDF format (English) using the same website link.

For any questions regarding the WAREOS, please contact the World Archery office, Mr. JK LEE ([jklee@archery.org](mailto:jklee@archery.org)).

A maximum number of **4 athletes per country** is allowed to be registered into each category of the event. Preliminary entries should be completed using WAREOS.

Start date for online registration using WAREOS	<b>19 January 2017</b>
End of Preliminary registration using WAREOS:	<b>22 March 2017</b>
End of Final registration using WAREOS:	<b>30 May 2017</b>

Please respect the stated deadlines.

Member Associations should only use WAREOS to make any changes/amendments to their entries and will be able to do so at any time. Any changes made in WAREOS an email will instantly be automatically sent to the Organising Committee and Member Association with the updated information.

However, any changes that are made after the deadlines specified or if entries differ by more than 4 athletes from the preliminary entries, the following penalty fees will automatically be applied.

## Hyundai Archery World Cup 2017, Stage 3 20 - 25 Jun – Salt Lake City (USA)

FINAL Version.1.1 (26 January 2017)

Penalty fees to be paid to Organising Committee:	Cost (USD):
Entries made after the preliminary and/or final entry deadline date.	<b>50</b> per entry
If final entries differ from the preliminary entries by more than 4 athletes/officials.	<b>150</b> per entry
Failure to have made preliminary entries before the deadline date but then have submitted final entries.	<b>150</b> per entry

Penalty Fee to be paid to World Archery:	Cost (CHF):
Lost accreditation.	<b>30</b> each
Changes made to the athlete and/or team official names after the final entry deadline date and within 3 days prior to the start of the event.	<b>50</b> each change

**NOTE:** CHF currency exchange rates will be those on the date of the event.

Member Associations that have penalty fees outstanding from 2016 will need to have paid these penalty fees before being eligible to enter and compete.

Any entries received less than 3 days before the team managers meeting for a Hyundai Archery World Cup or World Championships will be refused if no preliminary entry and/or final entry are made prior. This decision cannot be appealed by the teams and is fully compliant with the current World Archery rules, article 3.7.1.2. Entries received after the deadlines, are subject to penalties as clearly stated in the rule book and the invitation documents of World Cups and World Championships. A Member Association that has made final entries in WAREOS and does not participate will be invoiced for the number of entries entered in the system, unless they have informed World Archery and the OC in writing at least one week prior to the event that they are unable to attend.

## ACCOMMODATION & GENERAL INFORMATION

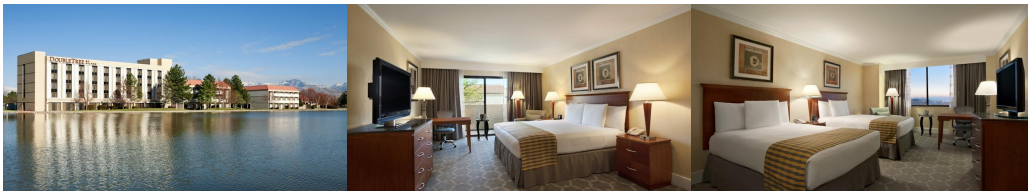
The official hotels are Doubletree by Hilton Salt Lake City Airport and Hilton Garden Inn Salt Lake City Airport. Due to the limited capacity of two 3.5-star hotels, the “First Come, First Serve” policy will be followed. The backup hotel will be provided subject to the number of the rooms reserved by the teams. All hotels are on the shuttle route and are less than 7 minutes from the venue. The accommodation cost will include breakfast and lunch. Dinner vouchers with a non-alcohol drink can be pre-purchased.

Teams who book their own accommodation will be charged a double entry fee.

- Reservations should be made on or before **22/03/2017**
- Final Hotel Reservation & Transportation: **15/05/2017**.

To confirm the reservation, a 50% deposit of the total amount is required to be bank transferred to the OC before **22/03/2017**. Reservations after this date will be considered only according to availability.

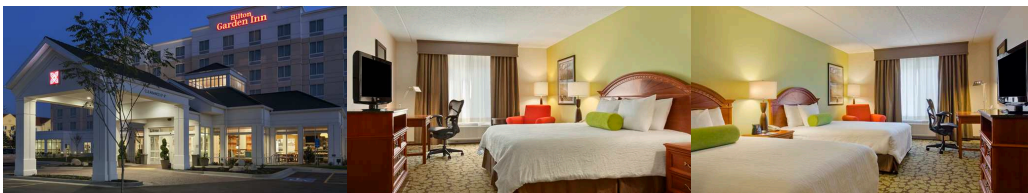
### 1. Doubletree by Hilton Salt Lake City Airport HOST HOTEL (3.5 Star)



- Single Room Half Fare (breakfast and lunch) \$180.00 USD
- Double/Twin Room Half Fare (breakfast & lunch) \$130.00 USD Per Person
- Hotel website

<http://www.saltlakecityairport.doubletree.com>

### 2. Hilton Garden Inn Salt Lake City Airport (3.5 Star)



- Single Room Half Fare (breakfast and lunch) \$180.00 USD
- Double/Twin Room Half Fare (breakfast & lunch) \$130.00 USD Per Person
- Hotel website

<http://hiltongardeninn3.hilton.com/en/hotels/utah/hilton-garden-inn-salt-lake-city-airport>

### 3. Holiday Inn Hotel & Suites Salt Lake Airport West (3.5 Star)



- Single Room Half Fare (breakfast and lunch) \$160.00 USD
- Double/Twin Room Half Fare (breakfast & lunch) \$115.00 USD Per Person
- Hotel website

<https://www.ihg.com/holidayinn/hotels/us/en/salt-lake-city/slcff/hoteldetail>

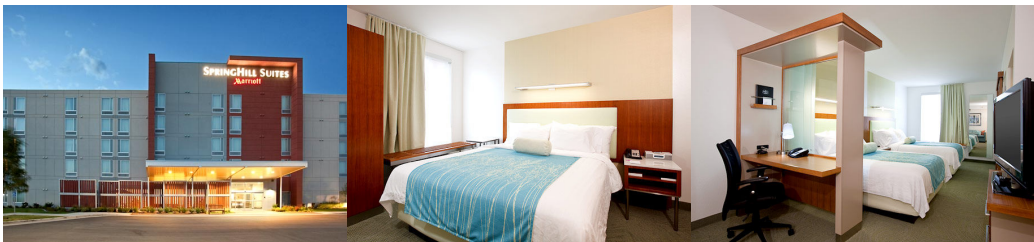
### 4. Courtyard by Marriott Salt Lake Airport (3 Star)



- Single Room Half Fare (breakfast & lunch) \$140.00 USD
- Double/Twin Room Half Fare (breakfast & lunch) \$100.00 USD Per Person
- Hotel website

<http://www.marriott.com/hotels/travel/slcap-courtyard-salt-lake-city-airport/>

### 5. Springhill Suites by Marriott Salt Lake City Airport (3 Star)



- Single Room Half Fare (breakfast & lunch) \$140.00 USD
- Double/Twin Room Half Fare (breakfast & lunch) \$100.00 USD Per Person
- Hotel website

<http://www.marriott.com/hotels/travel/slcsa-springhill-suites-salt-lake-city-airport/>

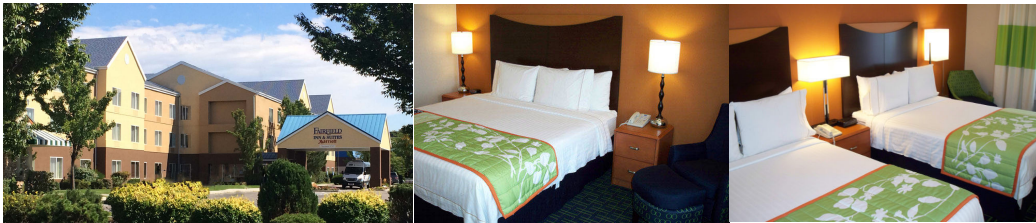
### 6. Residence Inn by Marriott Salt Lake City Airport (3 Star)



- Single Room Half Fare (breakfast & lunch) \$140.00 USD
- Double/Twin Room Half Fare (breakfast & lunch) \$100.00 USD Per Person
- Hotel website

<http://www.marriott.com/hotels/travel/slcr-residence-inn-salt-lake-city-airport/>

### 7. Fairfield Inn & Suites by Marriott Salt lake City Airport (3 Star)



- Single Room Half Fare (breakfast & lunch) \$120.00 USD
- Double/Twin Room Half Fare (breakfast & lunch) \$ 75.00 USD Per Person
- Hotel website

<http://www.marriott.com/hotels/travel/slcf-fairfield-inn-and-suites-salt-lake-city-airport/>

#### Important Note:

Please refer to the accommodation pages above for detailed hotel information. Please complete all the necessary sections in WAREOS and by the deadline of 15 May 2017 and make full payment for accommodation at the time of final hotel reservation. Bank transfers only, no credit cards or travel checks will be accepted.

**All accommodation requests received outside of the LOC negotiated hotel deadline dates, 18 June 2017 through 25 June 2017 are subject to current advertised hotel rates.**

Participants who book their accommodation in non-official hotels will have to pay double entry fee, and the LOC is not responsible to provide any transportation or meals from NON-Official Hotels. Transportation will be provided to and from official hotels only. In addition, no information will be distributed to the nonofficial hotels. Furthermore they have to register at accreditation no later than the day before the official practice. If they do not register the day before, no changes will be made to the entry list and it is likely that they will not be allowed to compete.

## PRELIMINARY DINNER VOUCHER FORM

**Daily dinners are not included in entry fee or accommodation payments at the Hyundai Archery World Cup Salt Lake 2017.**

A dinner voucher system will be used that will be redeemable at specific official hotel restaurants, official hotel room services, and participating downtown local restaurants. Dinner vouchers need to be purchased per person per day.

Vouchers will be available for purchase on-site at anytime. Locations and menus will be provided upon arrival.

Dinner Vouchers Payment

Number of Vouchers per Day \_\_\_\_\_ x Number of Days \_\_\_\_\_ x USD 20  
= \_\_\_\_\_

Alternatively, dinner vouchers can also be purchased in advance via WAREOS when finalizing entries and accommodation.



### ENTRY FEE

**Entry fee:**

Individual: **200 USD** per athlete

Officials: **100 USD** per person

**Entry fee in NON-official hotels:**

Individual: **400 USD** per athlete

Officials: **200 USD** per person

There is no entry fee for teams.

Entry fee includes daily local transport to and from practice field to the official hotels during the qualification, elimination and finals venues (timetable to be confirmed).

**PAYMENT CONDITIONS:**

The entry fees should be paid in full upon arrival.

For the payment of accommodation, a 50% deposit of the total amount payable is required and is due by **22/03/2017**. The balance shall be made upon arrival. Accommodation cannot be guaranteed after 15/05/2017 and at current advertised hotel rate may be applied. A balance invoice will be provided after payment.

**BANK INFORMATION for ACCOMMODATION, TRANSPORTATION and ENTRY FEES:**

BANK:

**BANK OF AMERICA**

ADDRESS:

**333 South Hope Street, Suite 1300  
Los Angeles, CA 90071**

BANK ACCOUNT HOLDER NAME:

**Easton Sports Development Foundation**

ABA ROUNTING NUMBER:

**026009593**

ACCOUNT NO:

**325017345417**

SWIFT CODE:

**BOFAUS3N**

**NOTE:** ALL PAYMENTS SHALL BE MADE IN USD

- By BANK TRANSFER or by CASH upon arrival
- All bank charges will be paid by the participants
- CREDIT CARDS or TRAVEL CHECKS will not be accepted

**To avoid delays in wire transfers please submit a PRO FORMA invoice to your bank with wire transfer request.**

### TO GUARANTEE RESERVATIONS

The 50% deposit of the accommodation must be paid in advance by **22/03/2017** made by bank transfer. The balance payment is due before arrival.

### ADDITIONAL INFORMATION

#### Transportation

Transportation will be provided from Salt Lake City airport to the official hotels, two days before the official practice day and two days after the closing day. Local transport will be available between official hotels and practice and competition venues. Transport timetables will be confirmed. Buses and/or vans will be provided.

#### Cancellations & Changes

Written Cancellations must be:

- Received before **15/05/2017** for full refund of the deposit payment
- Received later than **15/05/2017**, no refund.

All refunds, if any, will be processed after the event.

Name change (the same category and division) will be accepted up to 72 hours before the event without any additional charge. OC should be informed about changes in the travel program 72 hours prior arrivals. If your arrival is later than your original schedule, the room charges are starting from the original date indicated by the Member Association in their accommodation reservation.

#### Training

A training field will be available starting from **12 June 2017**. The training field is next to the competition field and is about 2.4 km from the hotels.

#### Weather

According to weather information, the average temperature in June is expected to be 55.8 to 82.2°F / 13.2 to 27.8 °C.

#### Internet

Will be available in the official hotels for free (in hotel rooms and in the lobby).

#### Water

Bottled water will be available at the qualification and practice venues.

### IMPORTANT INFORMATION REGARDING U.S. VISAS

Application for and obtaining travel visas to the United States are completely and solely the responsibility of the participating teams. A visa will be required of all visitors to enter the United States with the exception of citizens from 38 countries who are eligible for visa-free entry into the United States under the "Visa Waiver Programme". The process for obtaining a visa requires each individual to submit and pay application fees through a U.S. Embassy or U.S. Consulate. **This is a process that MUST be done by the applicant – the organizing committee cannot do it for you!**

The information contained in this document was current at the time of distribution. For updated information regarding visa requirements when traveling to the United States of America, please refer to following websites:

ESTA – The Official U.S. Government Website: <https://esta.cbp.dhs.gov/>

U.S. Dept. of State: [http://travel.state.gov/visa/temp/temp\\_1305.html](http://travel.state.gov/visa/temp/temp_1305.html)

#### VISA WAIVER PROGRAMME COUNTRIES

Andorra	France	Liechtenstein	San Marino
Australia	Germany	Lithuania	Singapore
Austria	Greece	Luxembourg	Slovakia
Belgium	Hungary	Malta	Slovenia
Brunei	Iceland	Monaco	South Korea
Chile	Ireland	The Netherlands	Spain
Czech Republic	Italy	New Zealand	Sweden
Denmark	Japan	Norway	Switzerland
Estonia	Latvia	Portugal	Taiwan
Finland			United Kingdom

**NOTE: IF YOUR COUNTRY IS LISTED AS A "VISA WAIVER PROGRAMME" COUNTRY, YOU ARE REQUIRED TO COMPLETE THE ON-LINE ESTA APPLICATION AT <https://esta.cbp.dhs.gov/>. IT IS IMPORTANT TO REVIEW THE ELIGIBILITY AND PASSPORT REQUIREMENTS TO ENSURE YOU MEET ALL THE CRITERIA BEFORE MAKING YOUR TRAVEL ARRANGEMENTS.**

Most categories of visas may be issued to an applicant up to 60 days before its effective date. HOWEVER, it cannot be emphasized enough that the letter of invitation and application process should start as early as possible. Participants from countries subject to additional clearances should be especially conscientious about applying early, since the State Department will not guarantee that ANY cases will be expedited.

# Hyundai Archery World Cup 2017, Stage 3

## 20 - 25 Jun – Salt Lake City (USA)

FINAL Version.1.1 (26 January 2017)

Letter of Invitation – For those countries not listed above on the VISA waiver programme, the OC will issue you a Letter of Invitation to use in your application process. AS SOON AS POSSIBLE please complete all the necessary sections fully in WAREOS for the Organising Committee to create the visa letter.

How long should you expect the process to take? There is no standard timeframe for how long it takes to get an appointment for a visa interview and it can vary dramatically from as much as 6 months to just a few days depending on the country. It cannot be emphasized enough to start the application process early.

PLEASE KEEP IN MIND – We cannot guarantee you will receive a VISA and we cannot provide special clearances if you are denied or apply too late. Also note that the application and interview process in your country may very well be in advance of the team selection date required by FITA, so in many cases, you will need to start the application process prior to confirming your final team.

### Visa

All participants who need an entry visa to the United States of America, will be required to complete the **Visa Support Form** in WAREOS by no later than **15 May 2017**.

It is the applicants' responsibility for supplying the necessary information, ensuring all details are up to date, correct and submitted by the deadlines specified.

In addition, all participants that require a visa are kindly requested to supply a copy of their latest/valid passport. Copies of each application can be uploaded on WAREOS. All passport copies and personal details entered/uploaded to WAREOS will be held securely and in the strictest of confidence and not shared with other parties.

Any questions please **email:** Jenni Bailey Edmunds at [loc.wcslc@gmail.com](mailto:loc.wcslc@gmail.com).  
[Visit our local website - http://archeryworldcupsaltlake.org](http://archeryworldcupsaltlake.org).

### **Salt Lake City, the city**

#### **Population** (Source: US Census Bureau, 2015 Population Estimates)

Salt Lake City: 191,180

Salt Lake County: 1,091,742

Wasatch Front: 2,192,225

State of Utah: 2,995,919

#### **Elevation**

City: 4,330 feet 1,320 meters

Nearby mountains:

Snowbird base: 8,100 feet 2,469 meters

Hidden Peak: 11,000 feet 3,353 meters

#### **Geography**

Salt Lake lies in a mountain valley with the Wasatch Mountains to the east and north. The Oquirrh (pronounced "oaker") Mountains border the western edge of the valley. Salt Lake's official elevation is 4,330 feet/1,320 meters above sea level. The city is situated on land once covered by the prehistoric Lake Bonneville. This ancient lake existed within portions of Utah, Nevada, and Idaho, with an elevation rising from 4,200 feet to 5,200 feet (1,280 meters to 1,585 meters) at some points. The eastern and northern portions of the city are located on a series of terraces, or former beaches, which are known locally as "the benches."

#### **Public Transportation**

Utah Transit Authority (UTA) provides over 100 bus routes throughout an 1,800 square-mile area. UTA also provides light-rail service, airport transportation, service to ski resorts in winter, and door-to-door transportation for disabled passengers. A free fare zone is available downtown.

### Top Down Town Salt Lake City Attractions



LDS Temple Square, you'll be immersed in 35 acres of enchantment in the heart of Salt Lake City. Whether it's the rich history, the gorgeous gardens and architecture, or the vivid art and culture that pulls you in, you'll be sure to have an unforgettable experience.



This Is The Place Heritage Park is the Place for FUN all year round! Step back in time and see the West as it was in the early settlement of Utah



Utah's Hogle Zoo dates from 1931 and is located at the mouth of Emigrations Canyon. Its natural terrain covers 42 acres of tree-lined pathways where visitors can view over 800 animals.



Tracy Aviary inspires curiosity and caring for birds and nature through education and conservation.

# Hyundai Archery World Cup 2017, Stage 3

## 20 - 25 Jun – Salt Lake City (USA)

FINAL Version.1.1 (26 January 2017)



Discovery Gateway children's museum is located in the Gateway Mall in downtown Salt Lake City. Discovery Gateway offers 60,000 square feet of interactive, hands-on fun. Come explore our engaging workshops, programs, and exhibits that invite the whole family to create, learn, and play together!



Clark Planetarium's mission is to create and present enlightening experiences that inspire wonder in learning about space and science, and to promote greater public awareness of the science in our daily lives.



The Natural History Museum of Utah opened its doors to the public in the George Thomas Building in 1969. Since then, collections have been transferred from the University's academic departments and grown through research, acquisition, and contributions to number more than 1.5 million objects. The Museum has solidified its position as the State museum of natural history and has developed strong programs of exhibits and education, both on-site and statewide. In November 2011, we opened our new facility, the Rio Tinto Center, with entirely new exhibit galleries, engaging programs for the public and state-of-the-art collections care and research facilities. At this milestone in the Museum's rich history, we acknowledge that we are a work-in-progress.



The Utah Museum of Fine Arts is Utah's primary cultural resource for global visual arts. It is unique in its dual role as a university and state art museum. It is Utah's only visual arts institution that collects, exhibits, interprets, and preserves a comprehensive collection of over 5,000 years of art from around the world.